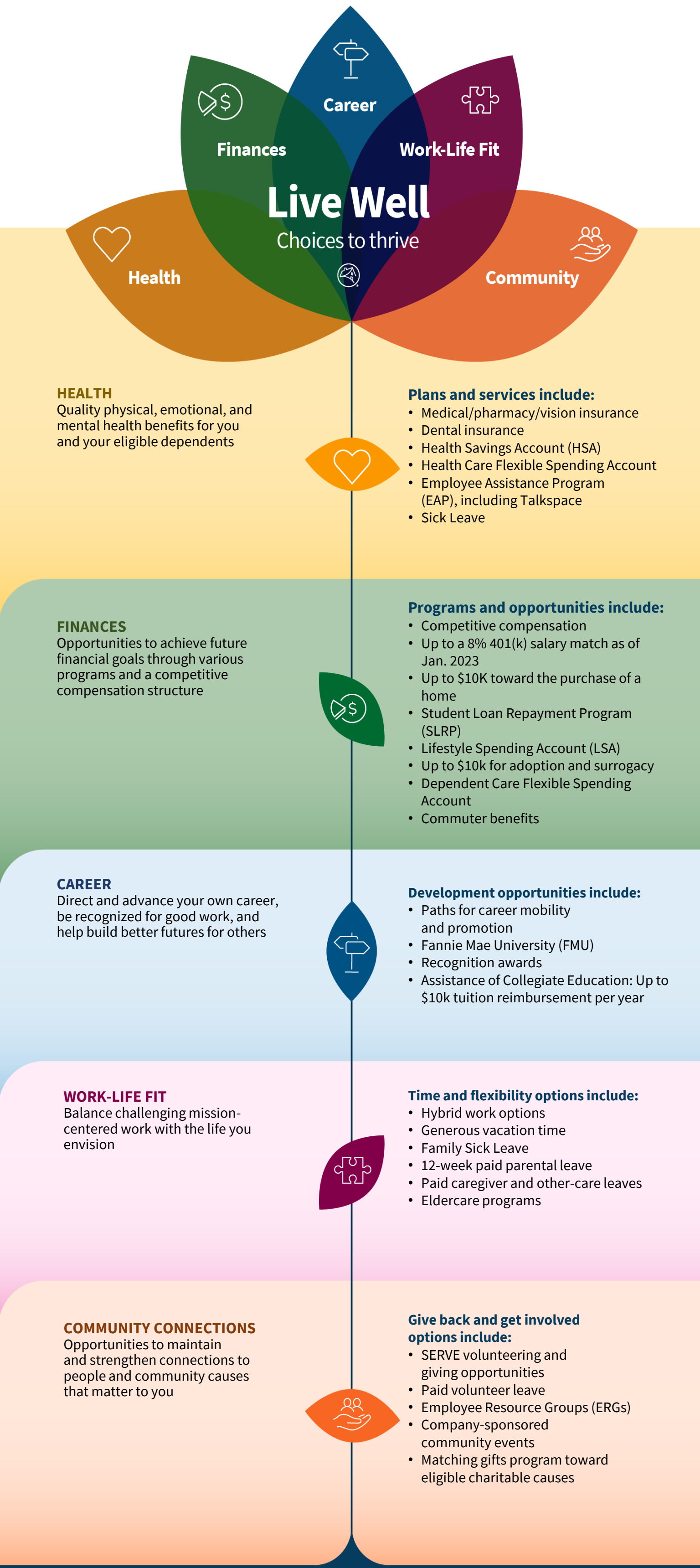


Employee benefits and resources

We offer competitive, life-encompassing benefits and resources designed to help our people meet their needs and personal goals. Below is just a sampling of what's available. Check out [Fannie Mae Careers Site](#) to see additional offerings for eligible employees.



The benefits reflected in this document are subject to change. Benefits are effective on date-of-hire except as otherwise specified. This is a summary of benefits for full-time and part-time employees normally scheduled to work 20+ hours per week. In the event of a conflict between this summary and the benefit plan terms, the plan terms will control.

[VIEW BENEFITS](#)